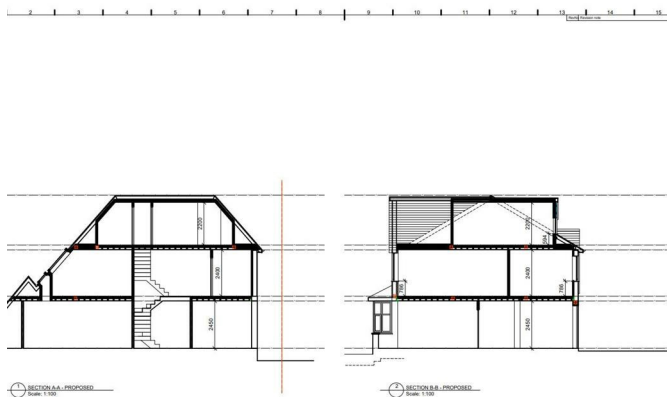
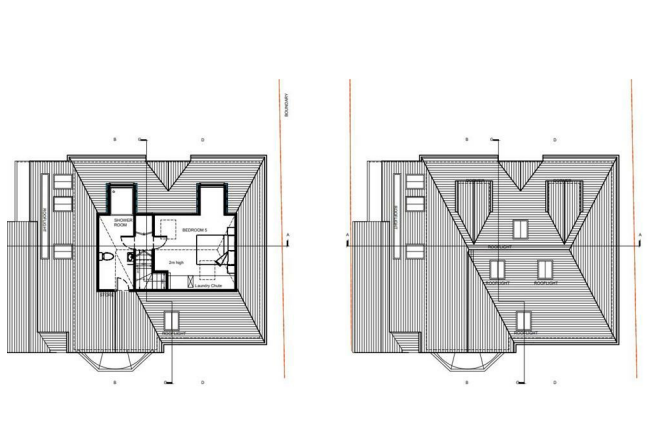
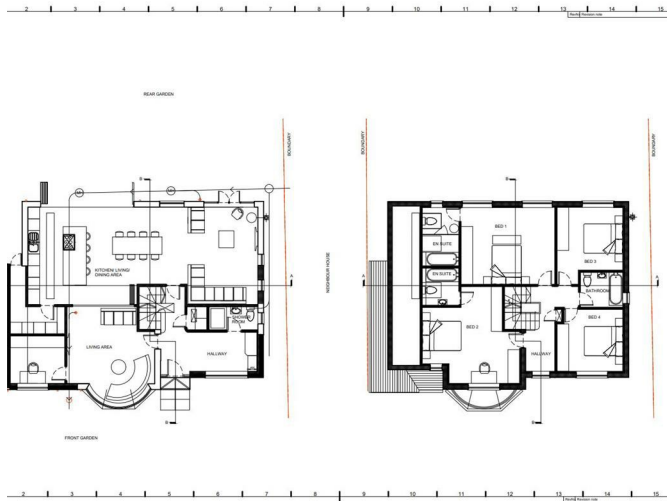


ALLDAY
& MILLER



The Close, Hillingdon, UB10 0BP
£850,000

 5  5  2  E



The Close, Hillingdon, UB10 0BP

£850,000

- Development Opportunity
- Planning Ref 7918/APP/2023/2070
- Private Wooded area to front owned by residents
- 1328 sq ft
- Walking Distance To Hillingdon Station
- Planning Permission Granted to build Large Family Home (plans attached)
- New Home Will be 5 Bedrooms & 5 Bathrooms
- Two Bathrooms
- Close to Court Park

Description

A development opportunity to design and build your dream home

This perfectly positioned bungalow is being sold with the benefit of planning permission to build a substantial 5 bedroom, 5 bathroom double fronted home of grand proportions.

Please see the approved plans attached.

Current property

A large detached double fronted bungalow with driveway and garage.

Situation

The Close is an exclusive tree lined private residential road that is regarded as one of North Hillingdon's most prestigious and sought after locations where properties rarely come onto the market. The property is conveniently located with excellent connections close by including St Bernadette's and Oak Farm schools and a number of recreational facilities that include Hillingdon Golf and Cricket Club, Court Park with its tennis courts and bowls club and the fitness and leisure centre in Uxbridge. Uxbridge Town Centre with its array of shopping facilities, restaurants and bars is a short distance away along with the A40 giving access to London and the Home Counties. Hillingdon train station with its direct links to Baker Street and the City is a short walk away along with a number of local shops.



